

SAND FOUNDRY



33 Quai de l'Industrie - BP 14061 - F71602 PARAY LE MONIAL CEDEX
☎: +33 (0)3 85 81 61 10 - FAX : +33 (0)3 85 81 61 11
Sales: sgiraudcarrier@fauchon-baudot.com
Website : www.fauchon-baudot.com



* * * * *

TO KNOW US

The company was created in 1902 and is located in Paray-le-Monial in the south of Burgundy. It manufactures about 200 000 hollowwares and refractory bricks per month and employs 43 people. 50% of its production is directly exported to Italy, Germany, Spain, Portugal and the United Kingdom. The company carries out an annual turnover of 3 million euros.

Our markets :

- Bottom casting metallurgy of iron
- Investment Casting and sand moulding
- Glass makers
- Chemical and concrete industry furnace
- Ceramic industry

Our Products :

- Specific shape parts : Nozzles, Tubes, Pouring cups and bells, Runners, Pipes and king bricks,
- Fish tails, Elbows, Reducers and T-pieces
- Fire bricks, roof bricks and ladles bricks for
- Acid proof bricks = Pyrofer LPG

Hollowwares and standard Bricks from 40% to 77% of Al₂O₃.

* * * * *

TABLE OF CONTENT

I – SAND FOUNDRY



Entonnoir	Pouring Bell	Trichter	P. 4
Entonnoir Long Col	Pouring Bell with Collar	Trichter	P. 4
Entonnoir Long Col Hexag.	Pouring Bell with Hexag Collar.		P. 4
Virole	Tube	Rohrstücke	P. 5
Coude 90°	90° Bend	90° Krümmer	P. 5
Coude 45° A 7.5°	Bend	Krümmer	P. 5
Convergent	Reducer	Reduzierstucku	P. 6
Divergent	Enlarger	Erweiterungsstücke	P. 6
Attaque monobloc	Fish tail Ingate	Messeranschnitt	P. 6
Talon	Elbow	L-Stücke	P.7
TE	T-Piece	T-Stücke	P.7
NON STANDARD	Special Shapes		P.8
Emboîtements	Joint System		P.9

II – LADDLE REFRACTORIES

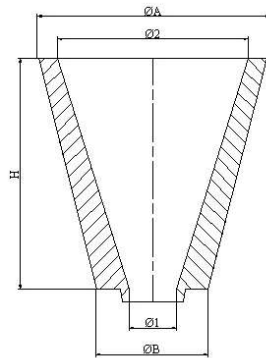


Virole de quenouille	Rod Covers		P.11
Busettes	Nozzles		P.11

IV – TECHNICAL DATA SHEETS

Qualité	Grade	Qualität	P.12
---------	-------	----------	------

ENTONNOIR / POURING BELL / TRICHTER

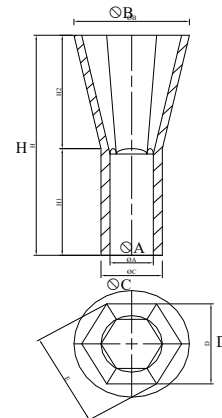
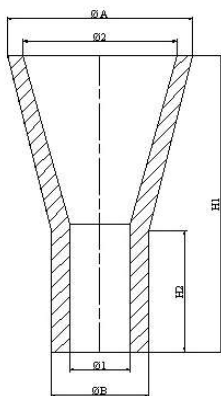


Ø1	Ø2	ØA	ØB	H	Qty / Pal	Hexagonal
30 / 40	120	145	70	145	350	-
40	120	145	70	145	350	-
50	120	145	75	145	270	-
60	120	145	85	145	270	-
	175	200	85	212	175	-
70	140	170	100	170	200	-
	170	200	100	220	175	-
80	160	190	115	190	140	oui
	230	265	115	280	60	-
100	200	240	140	240	96	-
	280	320	140	220	60	-
120	240	280	160	280	60	-
	280	320	160	220	60	-
150	300	350	200	350	24	-

Dimensions in mm.

POURING BELL WITH COLLAR

HEXAGONAL POURING BELL

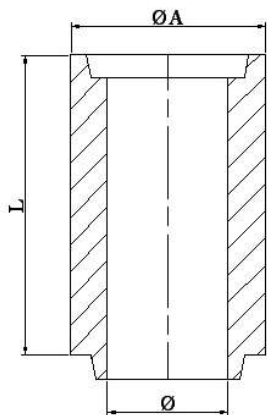


Ø1	Ø2	ØA	ØB	H1	H2	Qty / Pal
40	100	126	64	195	80	385
	120	145	75	190	20	300
50	120	145	75	190	20	300
	120	145	75	240	70	300
	120	145	75	285	115	240
	135	160	75	385	215	162
	135	160	75	425	255	108
60	120	148	84	190	45	300
	120	148	84	240	95	300
	120	148	84	290	110	240

ØA	D	ØB	ØC	H	Qty / Pal
50	120	160	75	240	180
	120	160	75	290	180
	120	160	75	340	180
	120	160	75	370	180
	120	160	75	370	180
60	120	160	85	300	108
	120	160	85	330	108
	120	160	85	375	108
	160	200	85	240	70
	160	200	85	300	70
	160	200	85	365	70
70	160	200	85	430	70
	170	230	100	230	96

Dimensions in mm.

VIROLE / TUBE / ROHRSTÜCKE

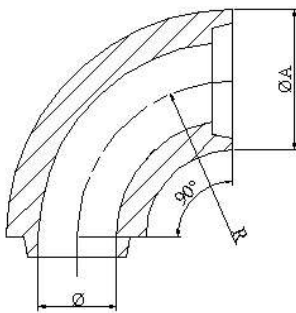


Ø	ØA	Qty / Pal				
		Lg : 50	Lg : 100	Lg : 150	Lg : 200	Lg : 300
30	55	2392	1196	897	1196	660
40	65	2310	1680	1050	840	630
50	75	1530	1224	765	612	459
60	85	1280	1024	640	512	384
70	100	1008	504	420	336	252
80	115	737	469	335	335	201
90	120	648	-	-	216	162
100	140	540	270	225	180	135
120	160	336	231	165	165	99
150	200	200	120	100	80	60

All lengths are possible up to 350mm (on request).

Dimensions in mm.

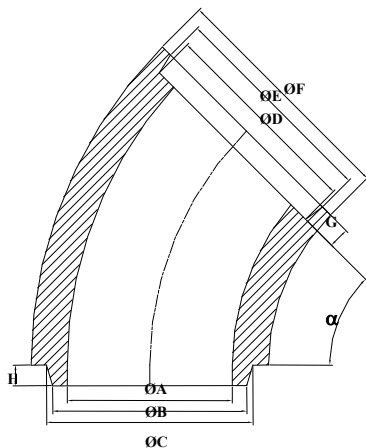
COUDE / BEND / KRUMMER : 90°



Ø	ØA	R	Qty / Pal
30	55	60	972
40	65	80	600
50	75	100	432
60	85	120	264
70	100	140	189
80	110	160	120
100	140	200	78
120	160	240	60
150	200	300	24

Dimensions in mm.

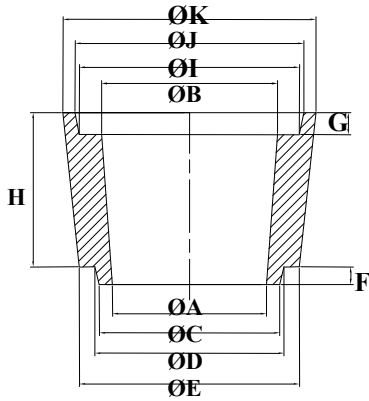
COUDE / BEND / KRUMMER : 45° – 30° – 15° - 7.5°



α	ØA	ØF	Qty / Pal
45°	40	65	1120
	50	75	756
	60	85	624
	80	115	216
	100	140	126
	120	160	90
30°	150	200	30
	40	65	1428
	60	85	650
	80	115	280
	100	140	200
	120	160	120
15°	150	200	40
	80	115	420
	100	140	280
7.5°	120	160	224
	80	115	804
	100	140	560
	120	160	429

Dimensions in mm.

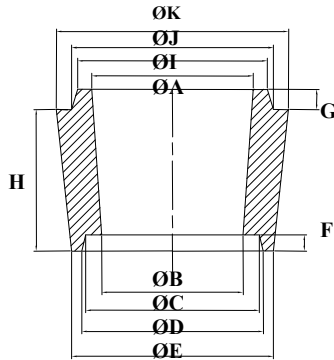
CONVERGENT / REDUCER / REDUZIERSTUCKE



ØB	ØA	ØK	ØE	H	Qty / Pal
40	30	65	55	50	2280
50	40	75	65	50	1600
60	50	85	75	50	1260
60	40	90	65	50	1200
70	60	100	85	60	864
70	50	100	75	50	770
80	60	115	85	100	770
80	70	115	100	70	539
100	80	140	115	50	540
120	100	160	140	100	210
150	120	200	160	120	144

Dimensions in mm.

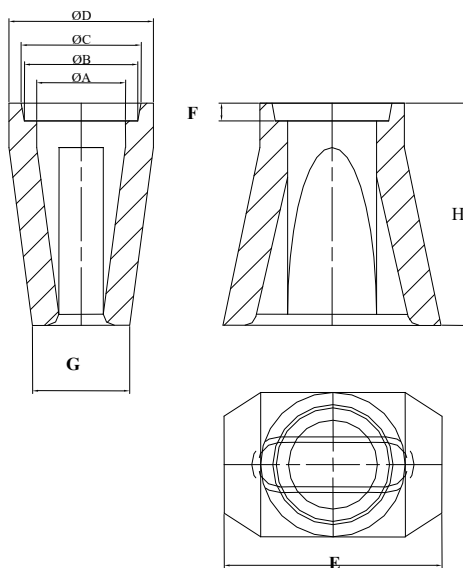
DIVERGENT / ENLAGER / ERWEITERUNGSTUCKE



ØA	ØB	ØK	ØE	H	Qty / Pal
30	40	55	65	50	2280
40	50	65	75	50	1600
50	60	75	85	50	1260
60	70	85	100	60	864
70	80	100	115	70	539
80	100	115	140	50	540
100	120	140	160	100	210
120	150	160	200	120	144

Dimensions in mm.

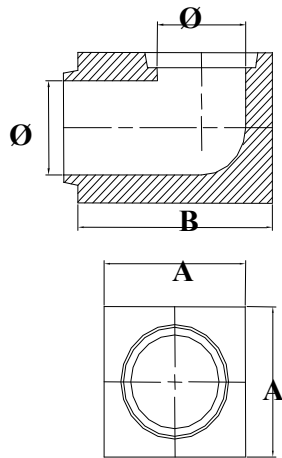
ATTAQUE MONOBLOC / FISH TAIL INGATE / MESSERANSCHNITT



ØA	E	G	H	Qty / Pal
40	98	43.67	100	1152
50	110	45	100	952
60	132	53	100	720
70				
80	175	70	100	440
100	210	90	100	288
120	251	96	100	168

Dimensions in mm.

TALON / ELBOW / L-STUCKE

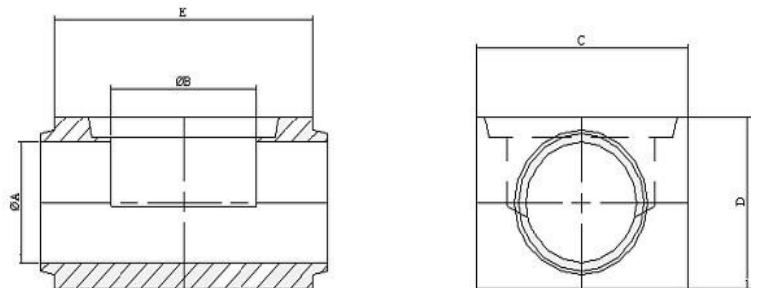
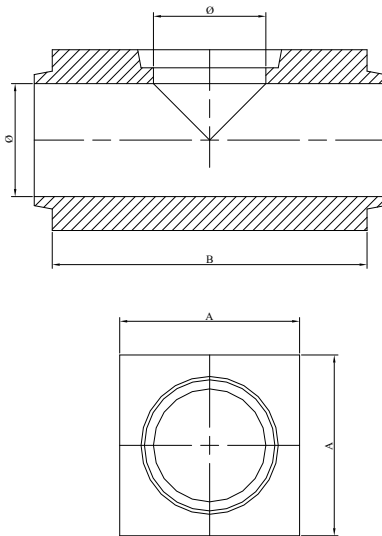


Ø	A	B	Qty / Pal
30	55	67.5	1800
40	70	77.5	1408
50	80	87.5	896
60	90	97.5	637
70	100	115	511
80	115	125	348
100	140	160	252
120	160	187.5	130
150	200	225	75

Dimensions in mm.

TE / T-PIECE / T-STUCKE

TE REDUCTEUR / REDUCER T-PIECE

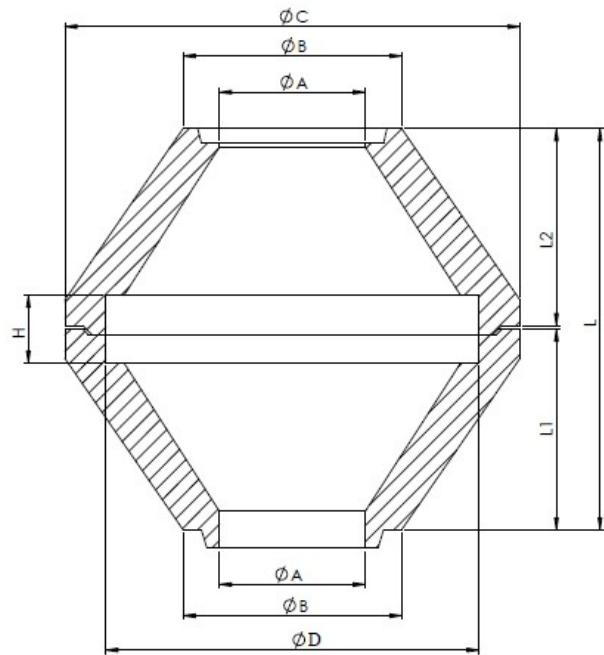


Ø	A	B	Qty / Pal
40	70	90	1120
50	80	100	752
60	90	110	518
70	100	130	357
80	115	140	329
100	140	180	174
120	160	210	144
150	200	250	70

ØB	ØA	Qty / Pal
60	40	518
70	50	372
70	60	357
80	60	329

Dimensions in mm.

FILTER HOLDERS

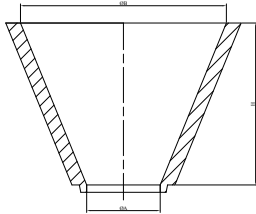


\varnothing	$\varnothing A$	$\varnothing B$	$\varnothing C$	$\varnothing D$	H	L1	L2	L	Qty / Pal
100 x 25	60	90	140	105	28	62	60	124	360
125 x 30	60	90	160	130	32	75	73	150	198
150 x 30	80	120	200	155	32	65	63	130	140
200 x 35	80	120	250	205	37	110	108	220	60

Dimensions in mm.

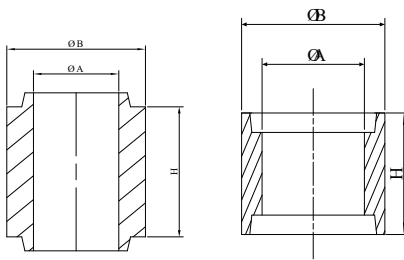
NON STANDARD SHAPES

SPECIAL POURING BELL



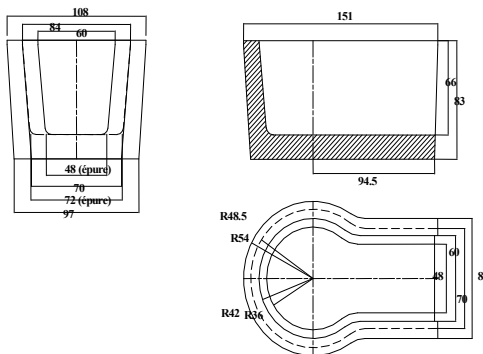
Ø 50/280 H220
Ø 60/175 H220
Ø 80/230 H290
Ø 100/280 H220
Ø 60 Square Shape

Double male or female Connector

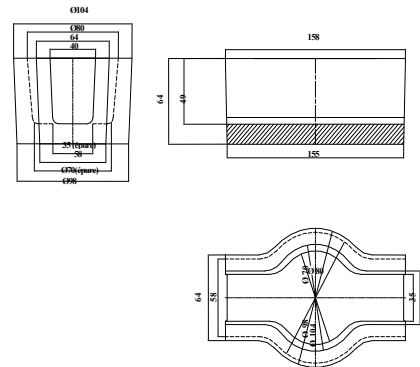


Ø 30
Ø 40
Ø 50
Ø 60
Ø 70
Ø 80
Ø 90
Ø 100
Ø 120

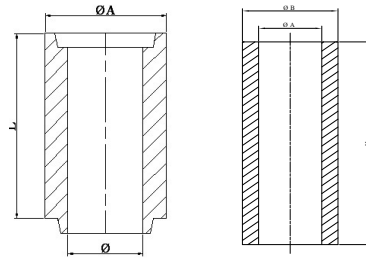
REPARTITEUR 1



REPARTITEUR 2

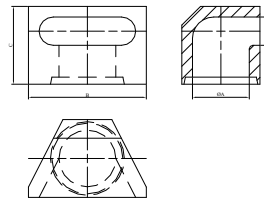


NON STANDARD TUBE



Ø 30 L 200 SE
Ø 30 L 300 SE
Ø 40 L 200 SE
Ø 40 L 270 SE
Ø 40 L 300 SE
Ø 50 L 200 SE
Ø 50 L 300 SE
Ø 60 L 200 SE
Ø 60 L 300 SE
Ø 60 L 310 SE
SE = without joint system
Ø 40 L 316
Ø 60 L 275
Ø 60 L 280
Ø 70 L 250
Ø 100 L 305

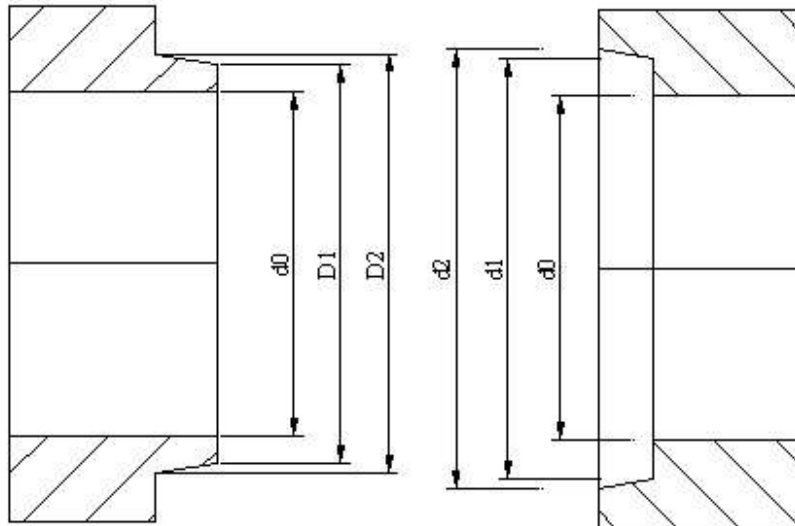
Attaque Latérale – Side Entry Ingate – Krümmeranschnitt



Ø 40
Ø 50
Ø 60
Ø 70
Ø 80
Ø 90
Ø 100
Ø 120

Dimensions in mm.
Others shapes on request.

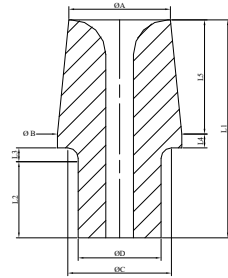
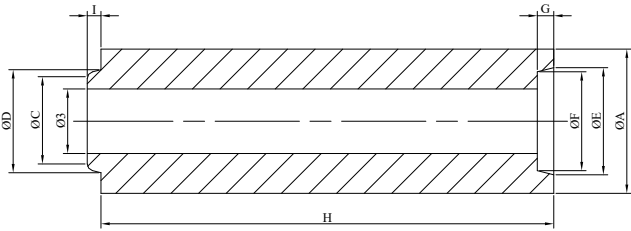
FONDERIE / FOUNDRIES / GIEßEREIEN
EMBOITEMENT / JOINT SYSTEM



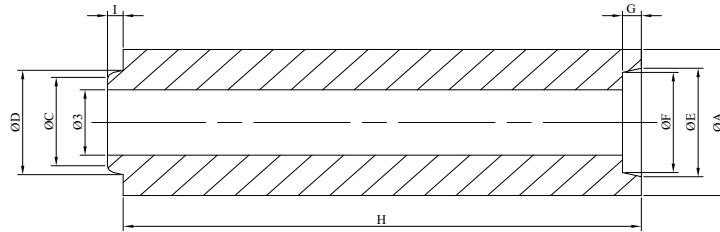
ø int	Male		Female		Depth	
	D1	D2	d1	d2	Female	Male
30	38	41	41	44	7	8
40	48	51	51	54	7	8
50	58	61	61	64	7	8
60	68	71	72	75	7	8
70	82	86	86	90	7	8
80	94	100	100	104	8	10
90	106	110	110	114	8	10
100	116	120	120	124	8	10
120	136	140	140	144	8	10
150	164	167	170	173	12	12

Dimensions in mm.

LADDLE REFRACTORIES

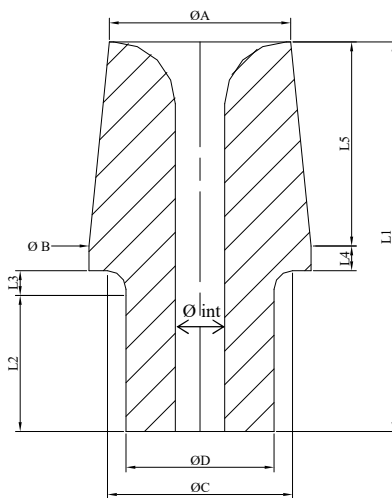


VIROLE DE QUENOUILLE / RODCOVER / STOPLENSTANGENROHRE

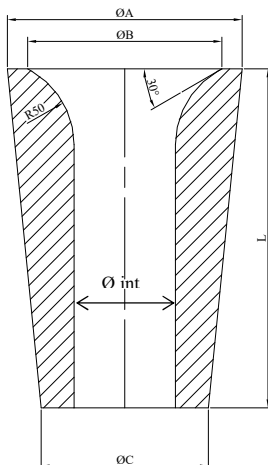


Model	ØA	Ø3	ØC	ØD	ØE	ØF	G	H	I	Qty / Pal
SR 0	90	40	60	65	68	62	12	270	10	351
SR 1	105	47	70	75	78	72	12	330	10	154
SR 2	120	47	70	75	78	72	12	330	10	120
SR 3	140	47	70	75	78	72	12	330	10	90
SR 5	170	60	95	100	103	97	12	330	10	60

BUSETTE/ NOZZLES / AUSGUSS



Ref.	Øint	ØA	ØB	ØC	ØD	L1	L2	L3	L4	L5	Qty / Pal
1A	40 to 80	139	155	110	100	210	100	10	20	80	160
2A	40 to 80	133	155	110	100	240	100	10	20	110	105
3A	50 to 100	153	180	140	120	285	110	20	20	135	72
4A	50 to 100	147	180	140	120	315	110	20	20	165	72



Ref.	Øint	ØA	ØB	ØC	L	Qty / Pal
6A	40 to 80	133	115	99	170	270
7A	40 to 80	139	115	99	200	270

TECHNICAL DATA SHEETS

Characteristics	Test Procedure	Unit	S37	S89	S50	S60	V70	V80
Chemical analysis								
	XRF							
SiO ₂		%	57	53	44	35	24	19
Al ₂ O ₃		%	37	40	50	60	71.5	77
TiO ₂		%	1.5	1.6	2.1	2.5	2.5	2.2
Fe ₂ O ₃		%	2	1.7	1.7	1.7	1,4	1.6
CaO		%	0.4	0.3	0.3	0.3	0.2	0.3
MgO		%	0.5	0.7	0.5	0.1	1.2	0.3
Na ₂ O+K ₂ O		%	1.5	0.7	0.5	1.3	0.3	0.2
P ₂ O ₅		%	0.1	0.1	0.1	0.1	0.1	< 0.1
Physical properties								
Bulk Density	ISO 5017	g/cm ³	2	2.07	2.25	2.32	2.45	2.55
Open Porosity	ISO 5017	%	21	21	19	19	24	23
Mechanical Resistance (Abrasion)	CI 96	% of weight loss		10	10.5	11	15	6
Pyroscopic resistance		°C	1670	1700	1750	1770	1800	1820
Linear expansion coefficient	CHEVENARD	10 ⁻⁶ K ⁻¹	5	5.3	6	6.5	6.3	6.3
Dimensional Tolerances	0 < D < 100 mm (mm)		2	2	2	2	2	2
	D > 100 mm (%)		2	2	2	2	2	2

S37 : Mainly iron foundry applications

S89 : Mainly steel foundry applications

Higher alumina rates for special steels or alloy depending on process or/and time casting